



## Why review the District Plan?

The current District Plan came into effect in 2000. Some changes and revisions have been made since then, but our district has changed a lot over the years and the current District Plan is out of date.

We need to check if it is up to date with all the national policies and regulations that have come into force since the last District Plan was prepared.

A good example of this is the National Policy Statement on Urban Development 2020 which requires us to densify and enable more housing within certain timeframes.

## What is the process?

The review of the District Plan is the last stage of the Planning for Growth project that has been in progress since 2017.

For the last year we have been working on the Draft District Plan. We now have a full draft and we want feedback on whether we've got things right.

This stage is non-statutory. It is an opportunity for us to test our draft provisions with the public, mana whenua, experts, and special interest groups.

In mid-2022 we will start the statutory process set out in the Resource Management Act 1991. This means we will be notifying the Proposed District Plan and there will be particular procedures and time frames that must be followed.

## Why is it important to you?



It determines what kind of business you or your neighbour can run from home



It influences how much noise you or your neighbours can make



It controls where and how you can subdivide your land



It influences the quality and types of housing



It controls what, where and how high you or your neighbour can build on a property

## Why is it important to our community?



It influences the shape and future feel of our city



It protects the uniqueness of our city



It makes us more resilient to natural hazards



It protects historical and cultural heritage



It ensures there is accessible open space for recreation



It protects our indigenous biodiversity



It ensures that we have a well functioning urban environment

# Kia whai mārama ki tō tātou Mahere ā-Wāhanga Tāone

## Understanding our Draft District Plan

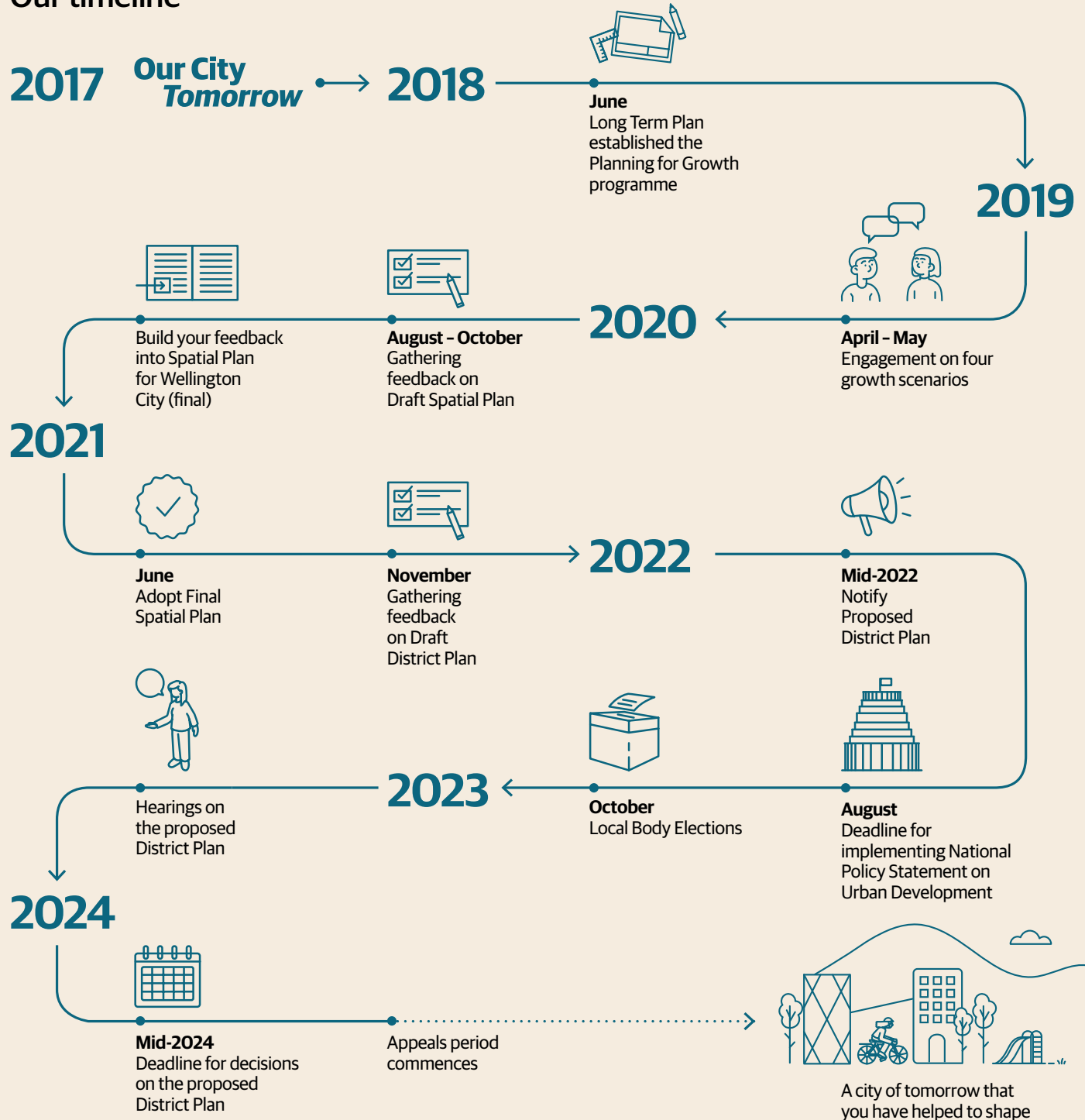
# The District Plan is about sustainable land use, environmental protection and enabling growth in the most suitable places.

It is a balancing act.

Its purpose is to protect our environment, historic places and cultural taonga for future generations through sustainable management of our resources, while supporting our communities to live and grow.

We are required by the Resource Management Act to review our District Plan every 10 years to make sure its rules strike the right balance.

## Our timeline



We'd love to hear your thoughts about what we're proposing.

Scan here to view the full Draft District Plan and to provide feedback, or visit [planningforgrowth.wellington.govt.nz/dpr](https://planningforgrowth.wellington.govt.nz/dpr)