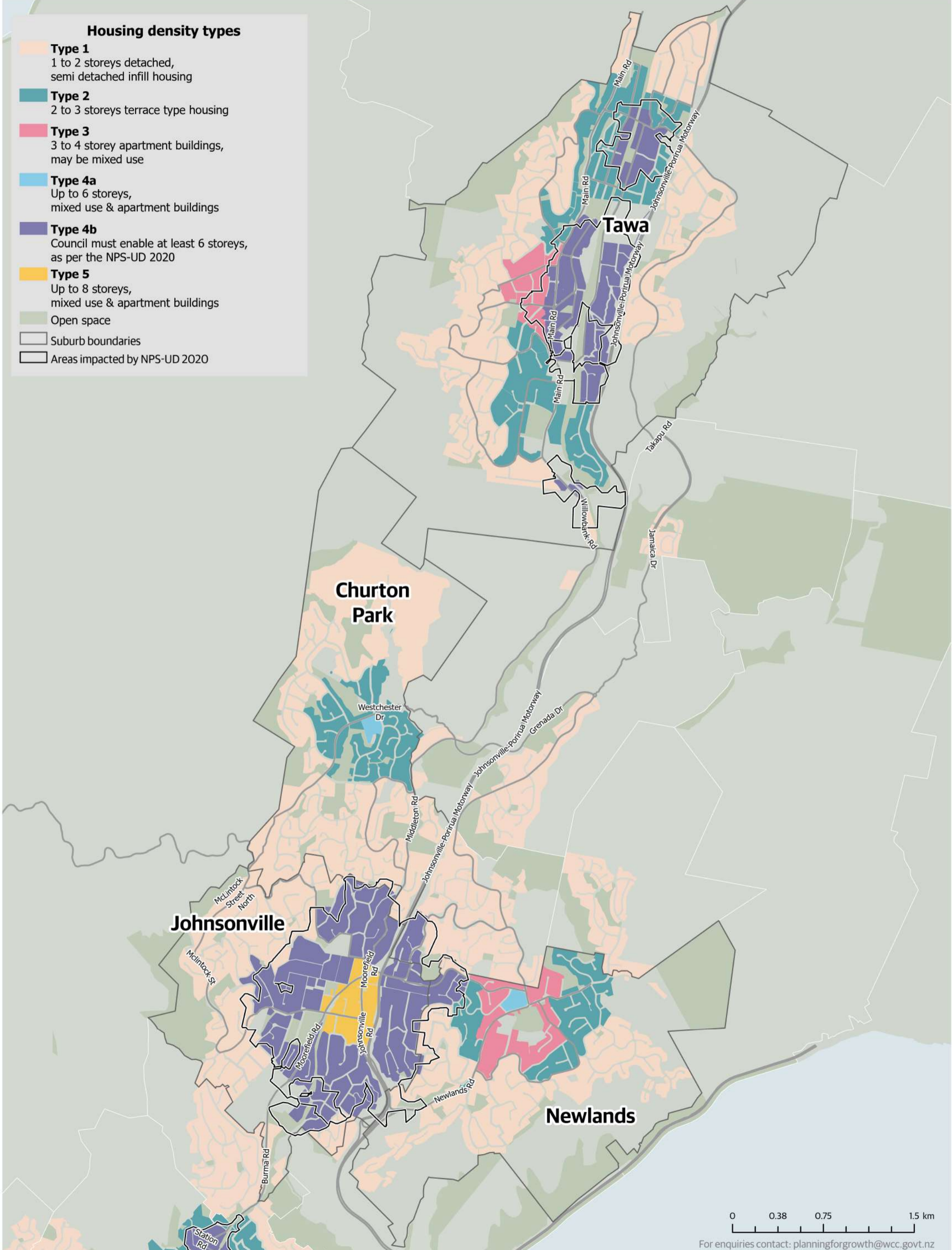


Intensification Northern outer suburbs



Housing density types

- Type 1**
1 to 2 storeys detached,
semi detached infill housing
- Type 2**
2 to 3 storeys terrace type housing
- Type 3**
3 to 4 storey apartment buildings,
may be mixed use
- Type 4a**
Up to 6 storeys,
mixed use & apartment buildings
- Type 4b**
Council must enable at least 6 storeys,
as per the NPS-UD 2020
- Type 5**
Up to 8 storeys,
mixed use & apartment buildings
- Open space
- Suburb boundaries
- Areas impacted by NPS-UD 2020

0 0.38 0.75 1.5 km

For enquiries contact: planningforgrowth@wcc.govt.nz