

Heritage in the Draft Spatial Plan

To view current heritage areas in relation to building typology

1. Click 'view heritage areas on the map' shown in the image below

The screenshot shows the 'Our City Tomorrow - Draft Spatial Plan for Wellington City' website. The 'Inner Suburbs' section is active, displaying a map of the area with various colored overlays representing proposed housing typology. The legend on the right indicates: Central City Area (grey), Type 1: 1 - 2 storeys (orange), Type 2: 2 - 3 storeys (teal), Type 3: 3 - 4 storeys (pink), Type 4: At least 6 storeys (purple), Type 5: Up to 8 storeys (yellow), and No change to existing District Plan heights (blue). The text on the left discusses 'Housing Density: Thorndon, Aro Valley/Holloway Road/The Terrace, Mt Victoria' and lists anticipated changes, such as encouraging medium density development and water sensitive urban design. A link to 'view heritage areas on the map' is highlighted in yellow.

To view all heritage areas, buildings and trees on the map

1. Click 'view heritage areas, buildings and trees on the map' as shown in the image below.

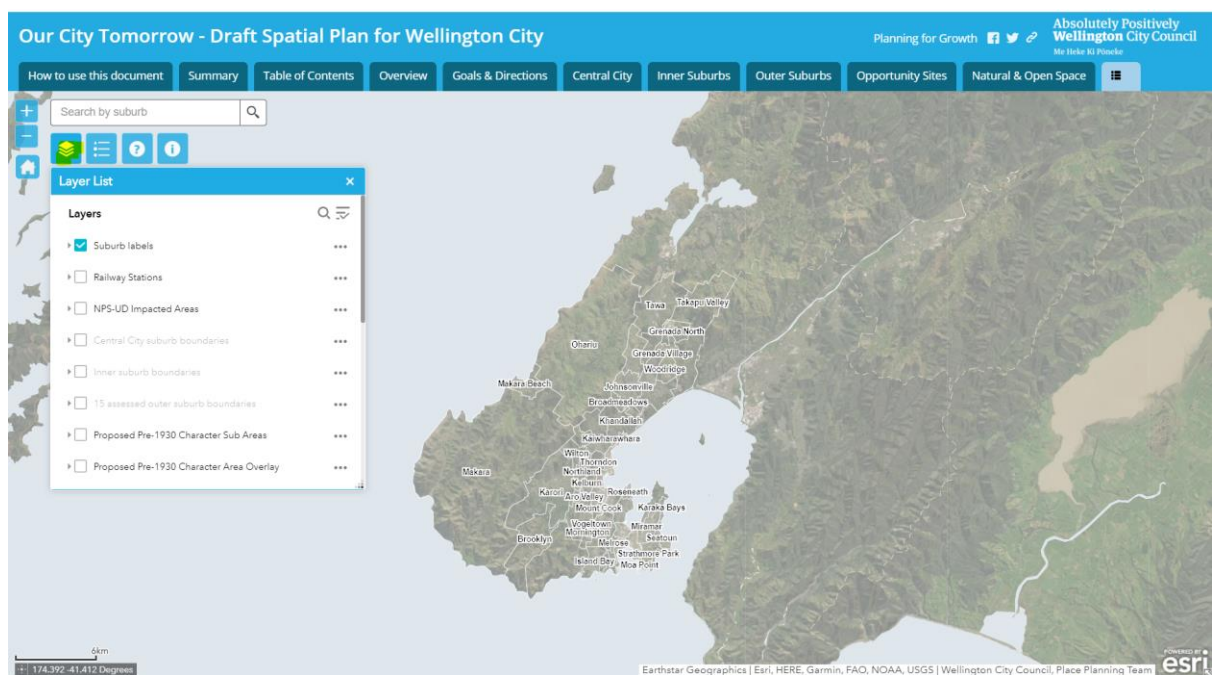
The screenshot shows the 'Our City Tomorrow - Draft Spatial Plan for Wellington City' website. The 'Inner Suburbs' section is active, displaying a map of the area with various colored overlays representing heritage buildings, areas, and trees. The legend on the right indicates: Heritage Buildings (orange dot), Heritage Areas (orange outline), Heritage Trees (green dot), and Thorndon, Aro Valley/Holloway Road/The Terrace, Mt Victoria (blue outline). The text on the left discusses 'Heritage, infrastructure & public open spaces: Thorndon, Aro Valley/Holloway Road/The Terrace, Mt Victoria' and lists anticipated changes, such as protecting existing heritage areas and investing in three waters infrastructure. A link to 'view heritage areas, buildings and trees on the map' is highlighted in yellow.

To view a custom selection of features on the map ie all heritage resources and housing density

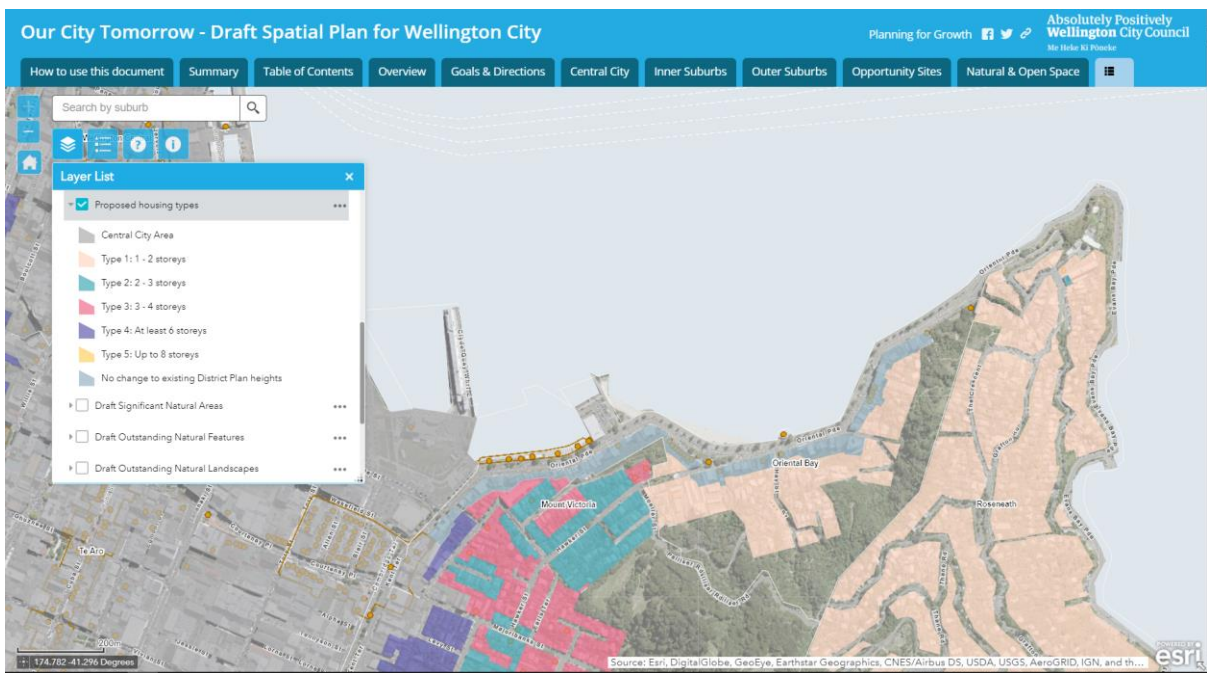
1. Click 'Map builder' from the spatial plan menu



2. Click the 'layer list' icon



3. Select the layers you want to see by 'ticking' the layer



In the image above, 'Proposed housing typologies' and 'heritage buildings and areas' are selected.